



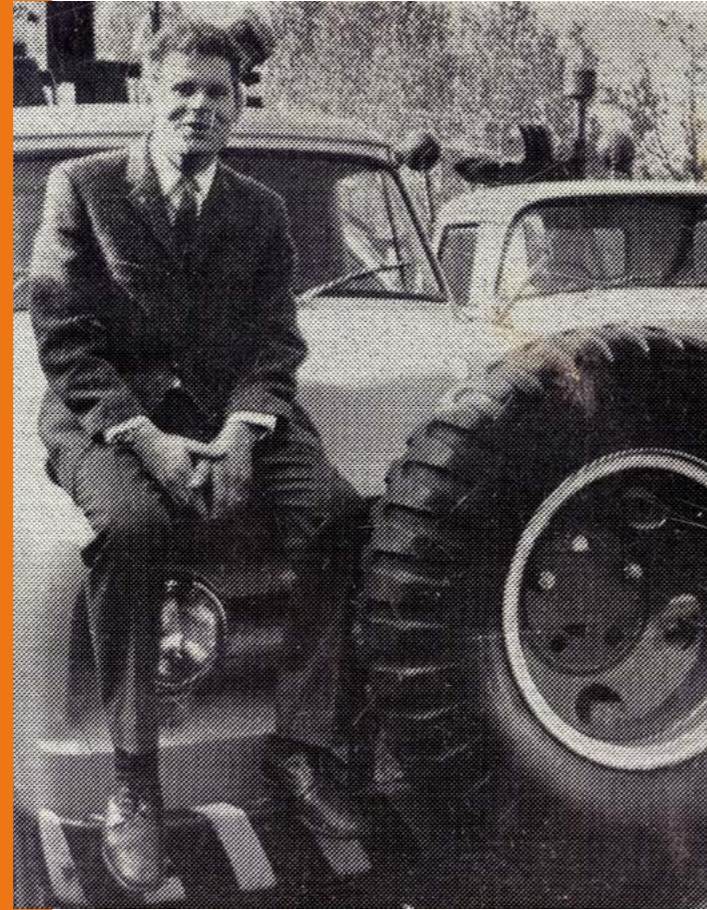
How it all began

1966 – Maarten Verschoor Sr. and his brother started a gas station. Maarten turned out to be a skilled mechanic with a keen business sense.

With the rise of automobile traffic, the demand for towing services increased. Maarten saw an opportunity and built his own recovery vehicle—soon, more self-built towing equipment followed.

From these towing activities, the company gradually evolved into an all-round lifting specialist, acquiring multiple cranes and transport vehicles over the years.

Today, Verschoor Cranes & Transport has grown to more than 100 employees, specializing in crane rental, lifting projects, and transport operations both inland and internationally. And the smart mechanics are still around: Verschoor has a specialized repair department for a wide range of crane types.

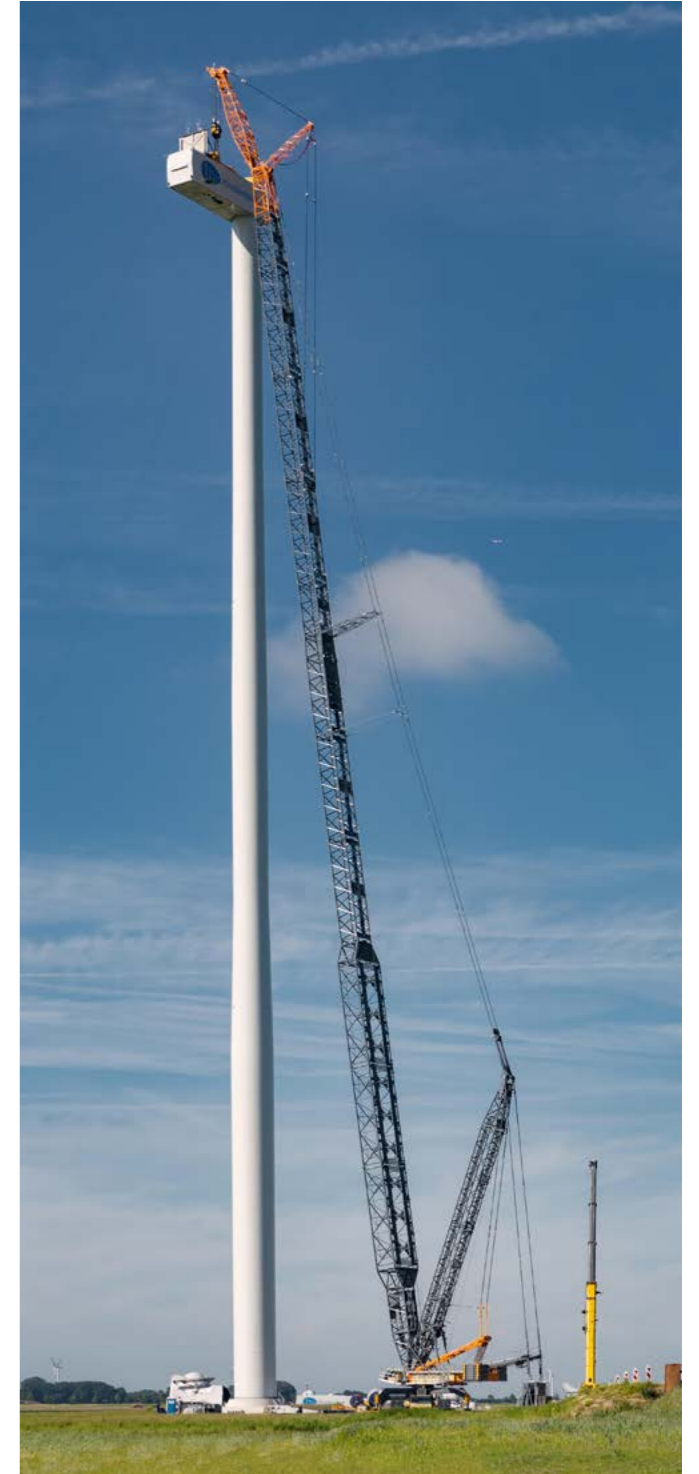


The start of the division Verschoor Wind Projects

Verschoor has been active in the wind turbine business since 2012 and in a short time has positioned itself as a reliable player in this market. We focus on the rental own operated cranes including operators and additional services. The first wind turbine project was the Zuidlob project in Zeewolde (NL), where we used auxiliary cranes for unloading turbine components and performing pressure tests at the crane stands.

In response to the growing demand for large cranes for wind turbine maintenance, Verschoor invested in a 400-ton telescopic crane. This machine's first assignment was an intercontinental project in the Caribbean, for the replacement of several gearboxes.

In 2015, Verschoor took a major step in expanding its capacity by investing in a Liebherr LR 1600 crawler crane. This strategic investment enabled the company to install complete wind turbines in addition to regular maintenance work, further strengthening Verschoor's position in the industry. Shortly after this important acquisition followed the purchase of a Demag CC 3800 crawler crane, which further expanded the operational capabilities of the fleet.



In 2017, the fleet was expanded again with the addition of the first LG 1750. In the year 2021, the fleet was further strengthened with the purchase of the first LG 1750 with SX3 configuration.

With subsequent investments, Verschoor's fleet consists of:

- Liebherr LR 1600
- Liebherr LG 1750(-SX3) (Three units)
- Liebherr LG 1800-X3
- Liebherr LR 11000

Project Management & Engineering

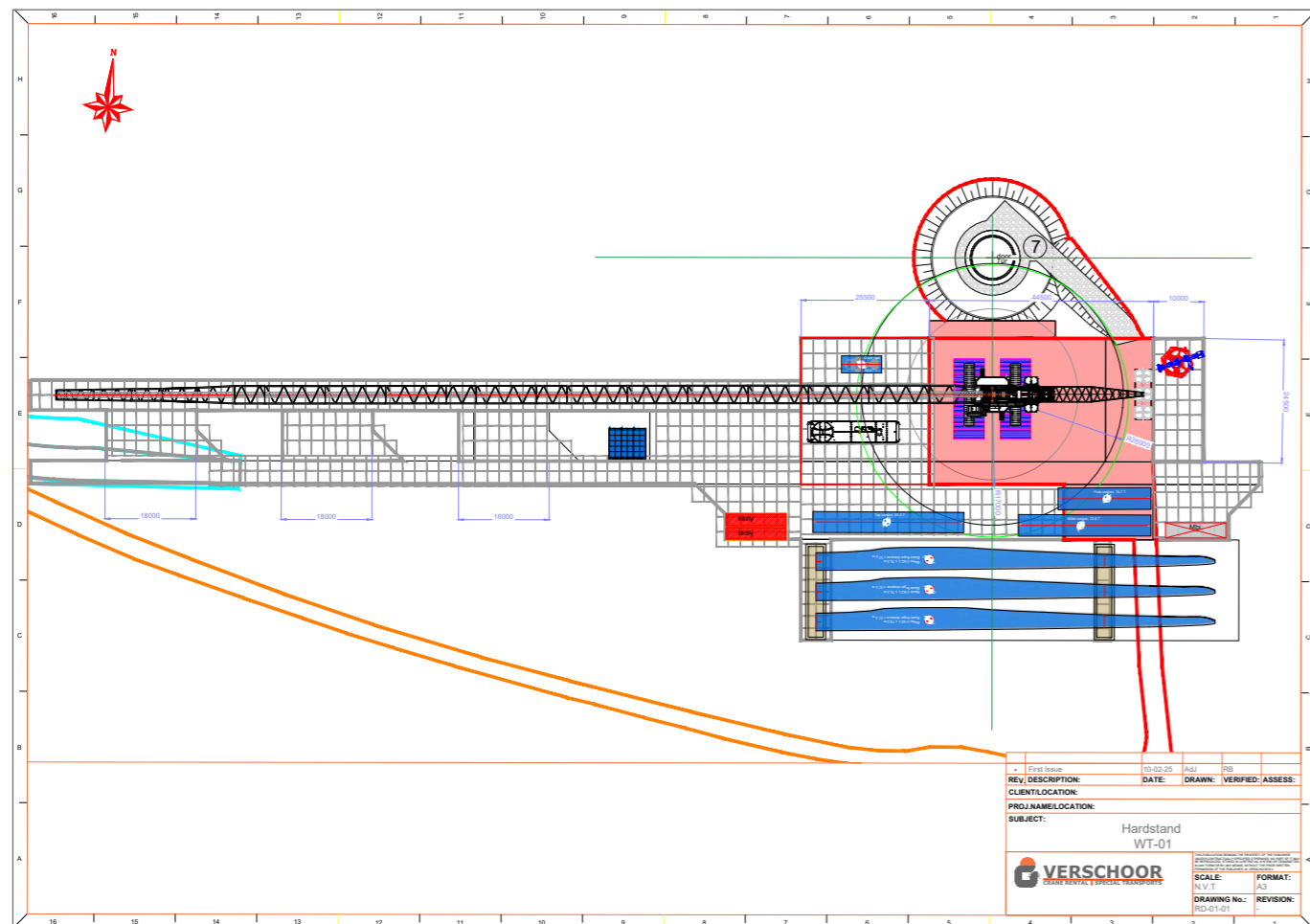
At Verschoor we distinguish ourselves by our excellent service. Besides offering cranes, we also offer additional support in the preparation of your project.

This includes offering advice on the construction site, preparing load plans and engineering. We also prepare lifting plans in AutoCAD and coordinate the final execution of the crane and transport work. In this way, we ensure that every aspect of your project runs smoothly.



Unloading Services

In addition to supplying large cranes, Verschoor also provides lighter lifting work on site with cranes up to 300 tons. This includes unloading turbine parts and assisting in the erection of Windcranes. We offer this service both on site and in the ports, where the parts are lifted from sea transport to road transport.



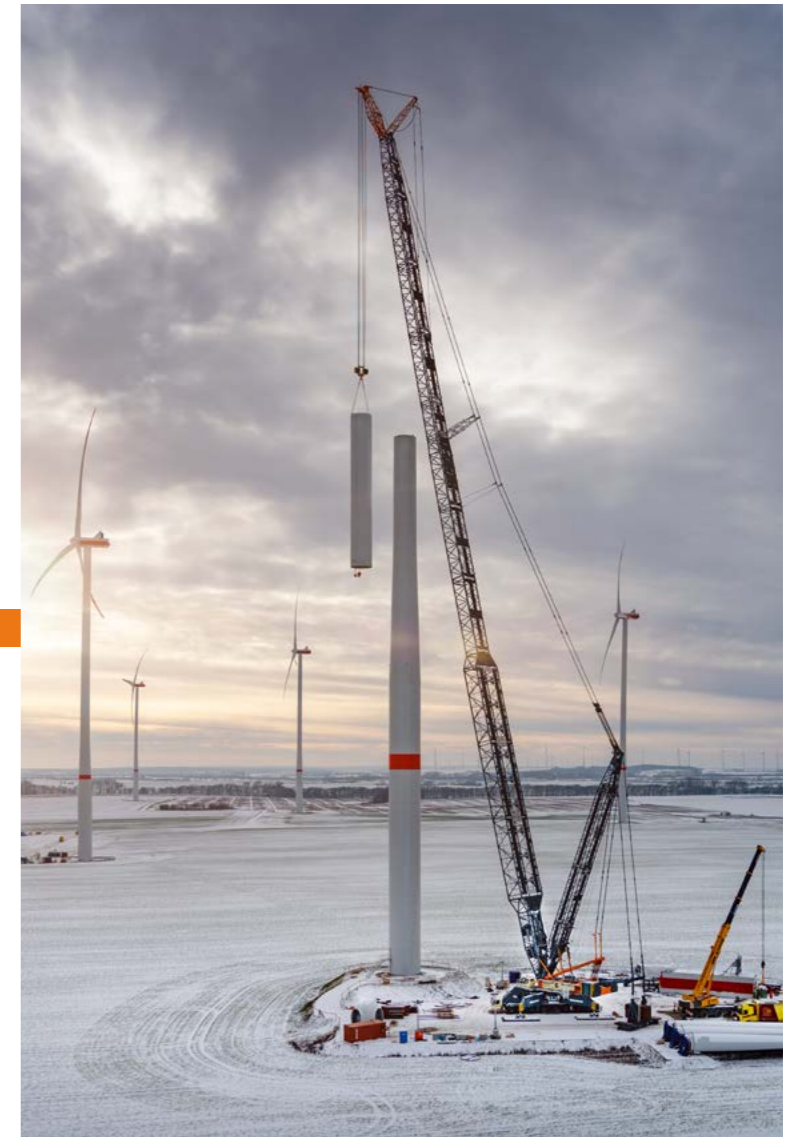
Liebherr LR 1600

Configuration:
SL13
Max. Boomlength:
147 + 12
Max. Capacity:
80 tons at 144 meters height



Liebherr LG 1750(-SX3)

Configuration:
SL12 or SX3
Outriggerbase:
12 x 12 meters
Max. Boomlength:
165 + 15 meters
Max. Capacity:
150 tons at 166 meters height





**Your trusted partner
in heavylifting cranes**

Liebherr LG 1800-X3

Configuration:
X3
Outriggerbase:
13 x 13
Max. Boomlength:
174 + 15
Max. Capacity:
129 tons at 175 meters height



Liebherr LR 11000

Configuration:
SL10
Max. Boomlength:
168 + 21
Max. Capacity:
125 tons at 175 meters height

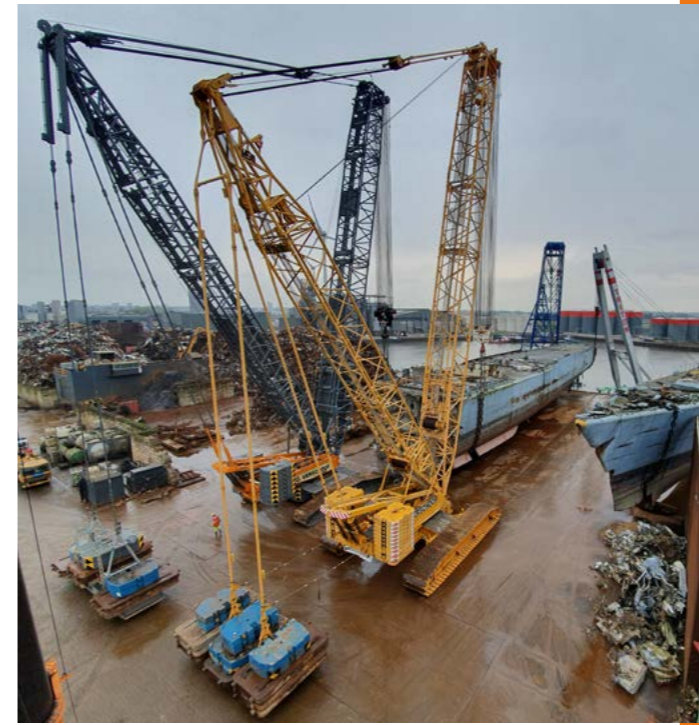




Throwback to Windpark Zeewolde & Windpark Blauw

The year 2021 was the year in which Verschoor won the prestigious Project Windplan Zeewolde. This project, which is proud to be the largest wind farm in the Netherlands, includes a total of 91 wind turbines and at its peak 6 Main Cranes were deployed simultaneously. The complete execution marks an important milestone for Verschoor in the Wind Projects. Acquiring this project provided Verschoor with the opportunity to further expand the fleet with the investment in the first LG 1750 with SX3 configuration.

The purchase of a second LG 1750-SX3 followed in 2022. This investment was needed for the subsequent Project Blue, which aimed to create the tallest wind farm in the Netherlands. This ambitious project included 37 onshore wind turbines with an impressive weight of 115 tons at a height of 166 meters.



Verschoor's heaviest lift

In addition to our experience in the wind sector, Verschoor does not shy away from other lifting challenges. In 2020, we received an order from a shipyard to lift a 2,300-ton marine frigate out of the water. For this project, we developed a complete lifting plan internally.

We then landed the ship in two parts with a duo hoist, performed with two in-house 600-ton crawler cranes and two hired floating derricks. The maximum lifting load of the crawler cranes was 581 tons, making this project the heaviest lifting in Verschoor's history!





Meet our team

Verschoor's employees are professionally trained and all hold a GWO certificate. In addition to experience in the wind turbine industry, and a fluent command of the English language, they work solution-oriented and to the highest safety standards.

Many of them therefore have a long history of employment at Verschoor. Thanks to their tireless efforts, Verschoor won The Vestas Global Safety Award in 2022.

A real family business



Contact

Working with Verschoor means building a strong and long-term relationship. We are always available to think along with you and offer customized solutions that perfectly fit your needs.

Wondering what we can do for your company? Feel free to contact us and discover the possibilities for a successful cooperation!

Ronald Bouwmeester

Project Manager Wind

M r.bouwmeester@verschoor-cranes.com

T +31 (0)6 55 88 63 69



Robbert Blom

Operational Manager

M r.blom@verschoor-cranes.com

T +31 (0)6 55 88 63 46





Scan the QR code
and view all our
equipment and more.